



ESTABLISHED 1798

# **DOW'S**

## **PORT**

**DOW'S 2017 VINTAGE PORT**

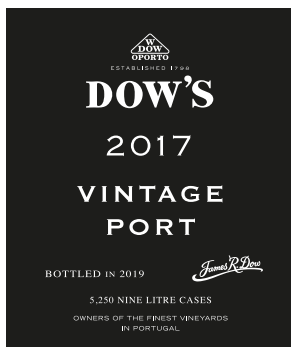
*James R. Dow*



## DOW'S 2017 VINTAGE PORT



QUINTA DA SENHORA DA RIBEIRA



5,250 CASES 12X75CL

16% OF DOW'S TOTAL VINEYARD PRODUCTION

It's remarkably rare for Dow's to declare two vintages in succession. It is only in years when the wines are of truly outstanding quality that a declaration is made. This typically only happens three times a decade — and only in exceptional circumstances in consecutive years. It is therefore with great excitement and pride that our family is declaring the Dow's 2017 Vintage. The wine has all the classic Dow characteristics and is undoubtedly a wine that is more than worthy of a declaration.

The 2017 was a very different year to 2016 in terms of the viticultural conditions and it was interesting to watch the progression of the wine and scrutinize its quality as it developed over its first two winters. Whereas 2016 had a



very mild winter and exceptionally hot summer, this was compensated by abundant winter and spring rainfall. Conversely, 2017 was warm and dry throughout, although summer temperatures were closer to average, which proved to be a very significant factor allowing for complete, balanced ripening.

It was evident when we decided on the final lots in early 2019 that the Dow's 2017 would live up to and even surpass the exacting standards of a Dow's Vintage. The potential to age gracefully for many years is another hallmark of a classic Dow's Vintage, which the stunning concentration, intensity and structure of this wine will undoubtedly enable.

For over a century the Dow's Vintages have been blended primarily from two properties, Quinta do Bomfim, near



THE 'VINHA GRANDE' VINEYARDS (TOP RIGHT) AT SENHORA DA RIBEIRA



QUINTA DO BOMFIM

Pinhão, and Quinta da Senhora da Ribeira in the Douro Superior. These two vineyards consistently produce some of the finest wines when the climatic conditions are favourable. Their grapes are amongst the best that the Douro can produce. In recent years, two other properties — Quinta da Cerdeira and Quinta do Cabeço — both of which are a few kilometres from Senhora da Ribeira, have made important contributions to the blend. *Cerdeira* is a south-facing vineyard enjoying good exposure through the growing and ripening cycles during the summer, providing for well-ripened grapes that produce intense, well-structured wines. The *Cabeço* has a range of exposures to the sun giving an interesting selection of wines.

In 2017, the mature plantings of Touriga Nacional from the east-facing *Vinha Grande* parcels at Senhora da Ribeira made an important contribution. These older vines' well-developed root systems and the cooler aspect of the vineyards proved their worth in the particularly hot and dry conditions.

Dow's grapes are fermented in the small, specialist wineries of Bomfim and Senhora da Ribeira. Our winemaking teams select various single variety plantings to vinify separately as well as some specific co-fermentations, which in 2017 included combined fermentations of Sousão and Touriga Franca. They are trodden in our modern *lagares* and achieve ideal extractions, producing wines of great complexity.

Following on from the three previous Vintages, the 2016, 2011 and the 2007, all of which were internationally acclaimed as classics, we have every expectation that the 2017 will be hailed as one of the finest we have produced in Dow's long and distinguished history.

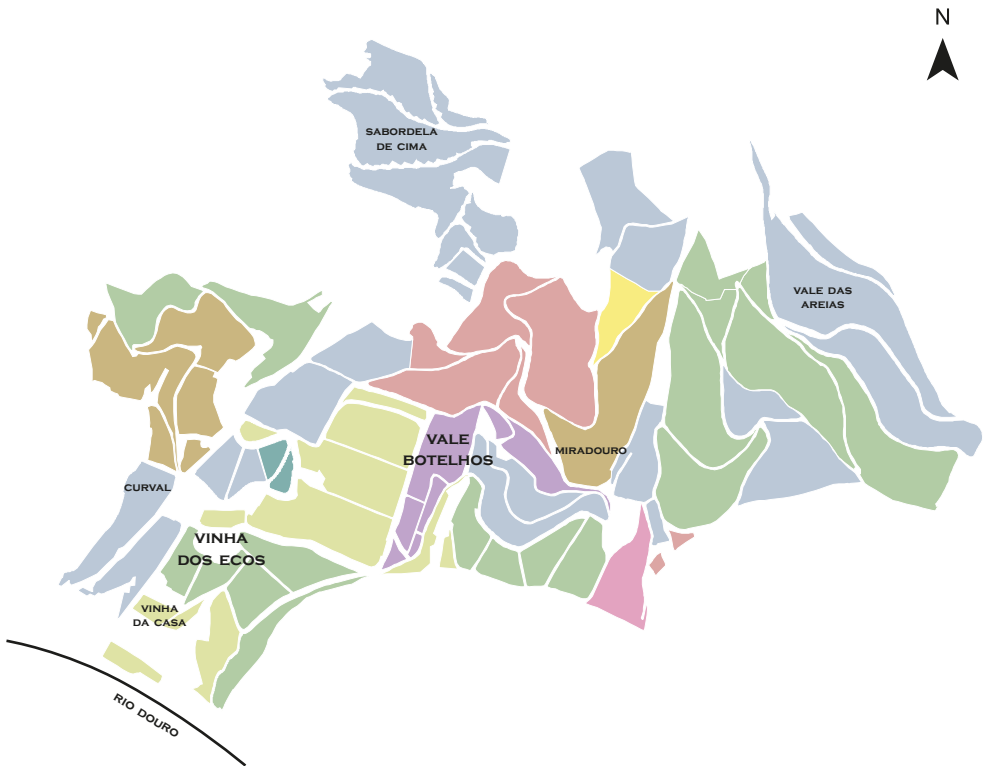
A very small quantity has been bottled, which represents only 16% of Dow's total vineyard production. The total amount bottled in all formats is 5,250 cases (9-litre case equivalent) including 240 magnums and 200 Tappit Hens.



### The wine

The Dow's 2017 reflects the pedigree that has given Dow's its legendary status in the fine wine world. Depth, intensity and power are the key hallmarks of this wine with a formidable structure that will ensure its ability to age for many decades.

### QUINTA DO BOMFIM



- |                  |                   |                       |
|------------------|-------------------|-----------------------|
| TOURIGA NACIONAL | TINTA AMARELA     | TINTO CÃO             |
| TOURIGA FRANCA   | SOUSÃO            | FIELD BLEND           |
| TINTA BARROCA    | ALICANTE BOUSCHET | GRAPE VARIETY LIBRARY |



LAGAR WINERY

### Tasting notes

It is rare to see such tremendous depth and intensity in colour as this wine displays. The freshness of the floral aromas is very attractive with a dominance of rockrose, a flower that grows wild around the hills of Senhora da Ribeira. On the palate, it is exceptionally full-bodied, rich and powerful with black fruit coming to the fore. Gorgeous, ripe fruit is balanced by the fine tannin structure. On the finish, it is typically Dow, austere and somewhat drier than many other ports. The intense fruit flavours linger long on the palate.

Charles Symington commented after selecting the final blend:

“This is one of the finest Dow’s Vintage Ports I have blended. I believe this wine more than deserves its place alongside our recent Dow’s Vintages of 2016, 2011 and 2007. In my opinion it has the potential to rank alongside the Dow’s all-time greats.”

### Provenance and variety make-up

- Quinta do Bomfim: 43%
- Quinta Da Senhora da Ribeira: 38%
- Quinta do Cabeço: 12%
- Quinta da Cerdeira: 7%
  
- Touriga Nacional: 42%
- Touriga Franca: 38%
- Sousão: 9%
- Old mixed vines (field blend): 8%
- Alicante Bouschet: 3%

### Wine Specification

- Alcohol by volume – 20% v/v (20°C)
- Total acidity – 4.24 (g/l)
- Baumé – 3.40
- Bottled during May 2019 with no filtration
- Winemakers: Charles Symington, Pedro Sousa (Bomfim) and Ricardo Carvalho (Senhora da Ribeira).